

Job & Person Specification

Job Title:	Project Engineer	Department:	Freshwater
Reporting to (Job Title):	Engineering Manager	Location:	Applecross

Job Purpose

The Project Engineer will primarily take responsibility for all Applecross engineering projects and snagging, ensuring that all land-based plant and equipment are up to standard and will communicate with contractors on any outstanding issues. The job holder will also be responsible for developing the PPMs to minimise downtime and driving CAPEX projects to support the site.

Person Specification – Essential

- Project Management experience
- Structured and practical electrical engineering training e.g. apprenticeship/HNC
- Experience of working with electrical / mechanical systems
- Sound understanding of IET Wiring Regs
- BS7671
- Flexibility in working hours
- Knowledge of IT systems and CMMS systems
- Ability to work in a safe manner and considers the safety of others
- A strong team player as well as the ability to work on your own initiative
- Proven ability to work under pressure/to deadlines
- Aware of importance of environmental issues
- Qualified to 17th or 18th edition Electrical Desirable , Strong background mechanical Plant and equipment

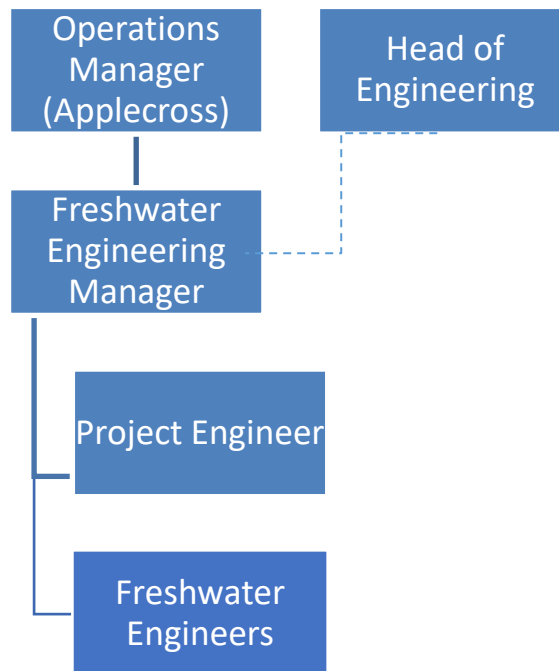
Person Specification - Preferable

- Plant equipment and basic Electrical skills on LV systems
- Sound understanding of the importance of Health & Safety issues
- Ability to work with minimal supervision and also to use initiative to resolve engineering issues
- Ability to prioritise to ensure efficient response to enquiries
- Ability to record issues and workload on the CMMS system is essential for the role
- UK full Drivers Licence

Role Accountabilities

- First point of call for all project related engineering requirements at site
- Accountable for tracking all project related engineering issues and accurately reporting cause and action to close out
- Liaising with contractors on snagging list and ensuring all issues are resolved promptly and effectively
- Communicating effectively with site team and project team on planned works and requirements
- Weekly updates with Engineering Manager
- Ensure departmental compliance with all Health and Safety and technical requirements
- Any other duty or task as reasonably requested

Organisation Chart



Values

We Prioritise Provenance - We are proud of our provenance, bringing together our cultural differences to raise sustainable, nutritional salmon, with full value chain integrity.

We Are Passionate – We celebrate our passion for our business and our people, who go above and beyond to accomplish our shared purpose, together. This is our competitive advantage.

We Are Respectful - We respect and care for our natural environment, each other, our employees and our local communities in which we live and work – sustainability is at the heart of everything we do.